

K-BOS[®]

KINETIC BLOWOUT STOPPER

COILED TUBING | WIRELINE | HWO GENERAL SPECIFICATION - APRIL 2021

KEY CAPABILITIES

BENEFITS & VALUE

“Shear Anything”

- Shear anything in the well above the bit
- Eliminate un-shearables from the oil & gas lexicon
- Enable optimized well designs & more robust tools

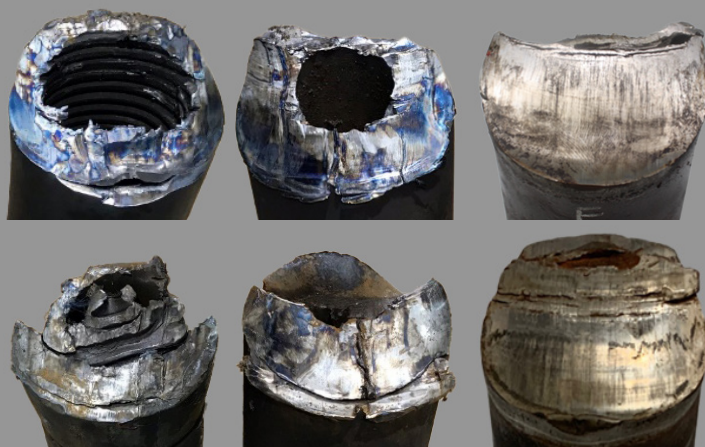
“Seal Instantly”

- Shut-in at full flow and pressure in milliseconds
- Dramatically reduce risk from flammable and/or toxic gas releases

“Ultimate Reliability”

- Proven High Reliability Components
- Proven best-in-class oilfield controls
- Working components isolated from wellbore fluids by metal to metal seals

5-15M K-BOS SHEAR TEST RESULTS



3-1/2" Tool Joint 3-1/2" Drill Collar 2-7/8" Sinker Bar

K-BOS Specifications for CT/WL/HWO Operations

Bore Sizes (in)	4-1/16"	5-1/8"	7-1/16"
Working Pressures* (ksi)	10, 15	10, 15	10, 15
Working Temperatures* (F)	0 to 350	0 to 350	0 to 350
Shut-In Times	<<1sec (milliseconds)	<<1sec (milliseconds)	<<1sec (milliseconds)
H2S Service	Extreme Service	Extreme Service	Extreme Service
Shearing Capability	2-7/8" BHAs 2-7/8" TJ and Drill Pipe All typical WL product	3-1/2" BHAs 3-1/2" TJ and Drill Pipe All typical WL product	5-1/2" BHAs 5-1/2" TJ and Drill Pipe All typical WL product
Shearing Capability	Same tubulars and wireline as shearing capability, regard-less of established flow up to 15ksi, Rated to shear and seal on tubulars moving at up to 10m/s	Same tubulars and wireline as shearing capability, regard-less of established flow up to 15ksi, Rated to shear and seal on tubulars moving at up to 10m/s	Same tubulars and wireline as shearing capability, regard-less of established flow up to 15ksi, Rated to shear and seal on tubulars moving at up to 10m/s

*HP/HT Configurations available upon request

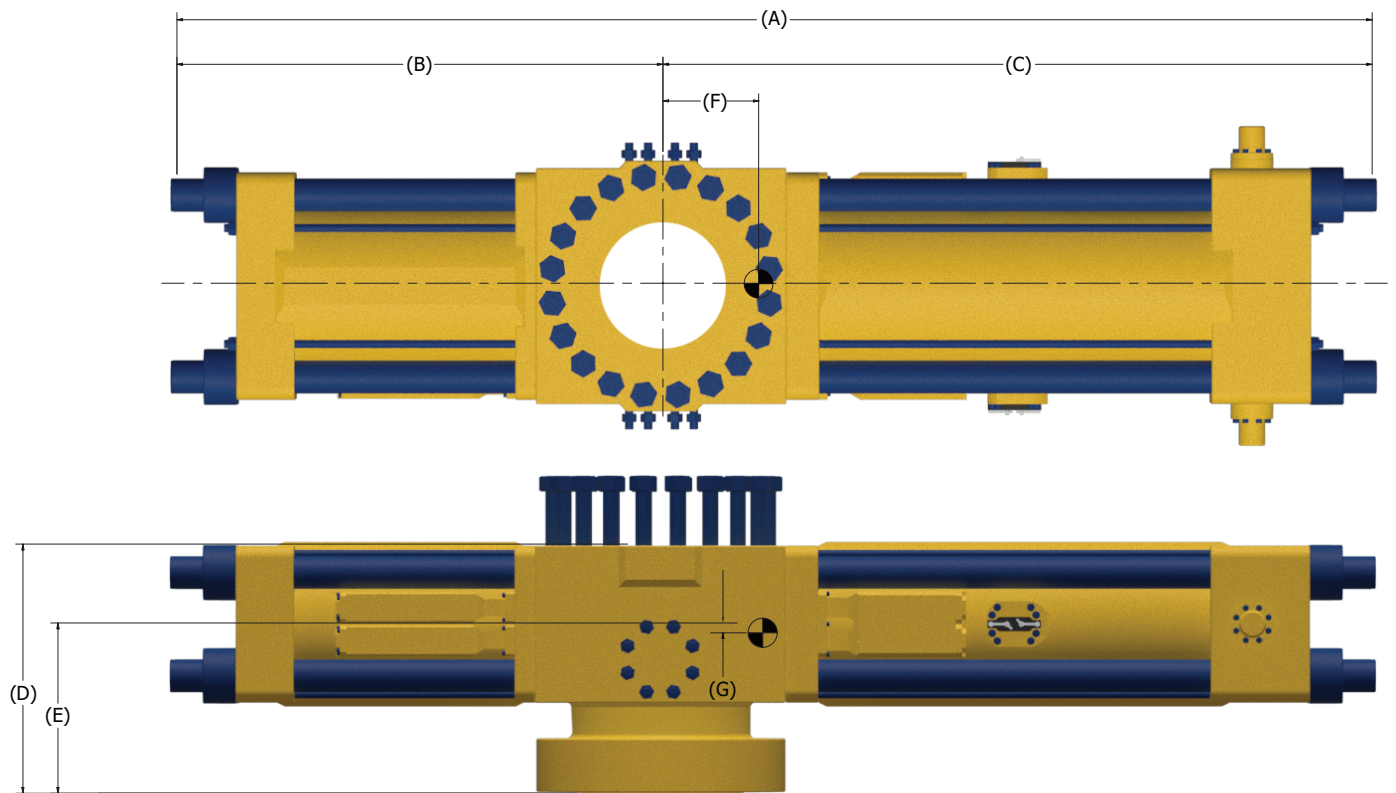


**KINETIC
PRESSURE
CONTROL**

www.shearanything.com

“The K-BOS[®] is the airbag for the oil & gas industry”

REFERENCE DIMENSIONS



K-BOS® Specifications for Drilling

Bore Size	WPR	Flange Gasket	Flange Configuration	Outlet Size	Outlet Gasket	Dimensions (in)					C.O.G. from Center Line (in)			Est. Dry Weight (Lbs)
						A	B	C	D	E	F	G	H	
4-1/16"	10,000 psi	BX-155	Flange Up / Flange Down	2-1/16" 10M	BX-152	79.8	32.4	47.3	28.3	15.3	6.9	0.9	0	2,050
5-1/8"	15,000 psi	BX-169	Studs up / Studs Down	2-1/16" 15M	BX-152	81.1	33.0	48.1	21.1	10.6	7.8	0.1	0	4,923
7-1/16"	15,000 psi	BX-156	Flange Up / Flange Down	2-1/16" 15M	BX-152	88.7	36.1	52.6	31.8	21.7	7.7	1.3	0	6,033
11"	10,000 psi	BX-158	Flange Up / Flange Down	2-1/16" 10M	BX-152	96.3	39.2	57.1	35.7	24.4	8.4	1.4	0	7,143

*"The K-BOS® is the airbag for
the oil & gas industry"*